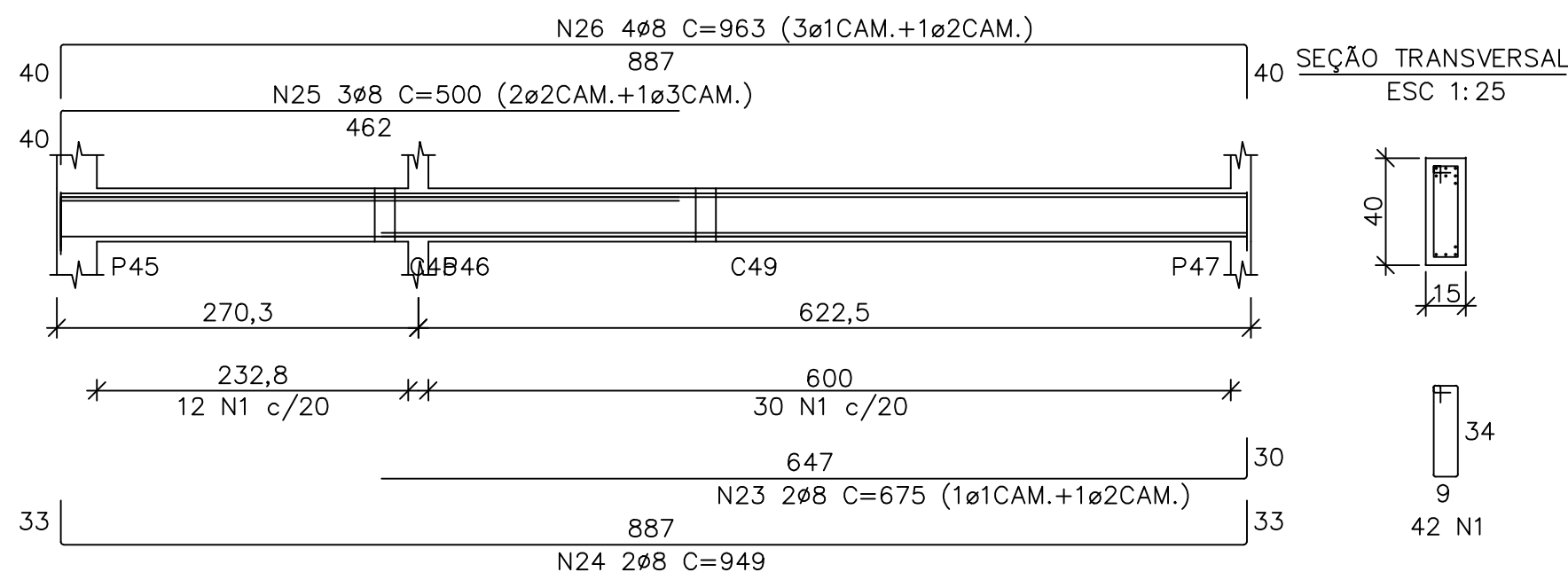
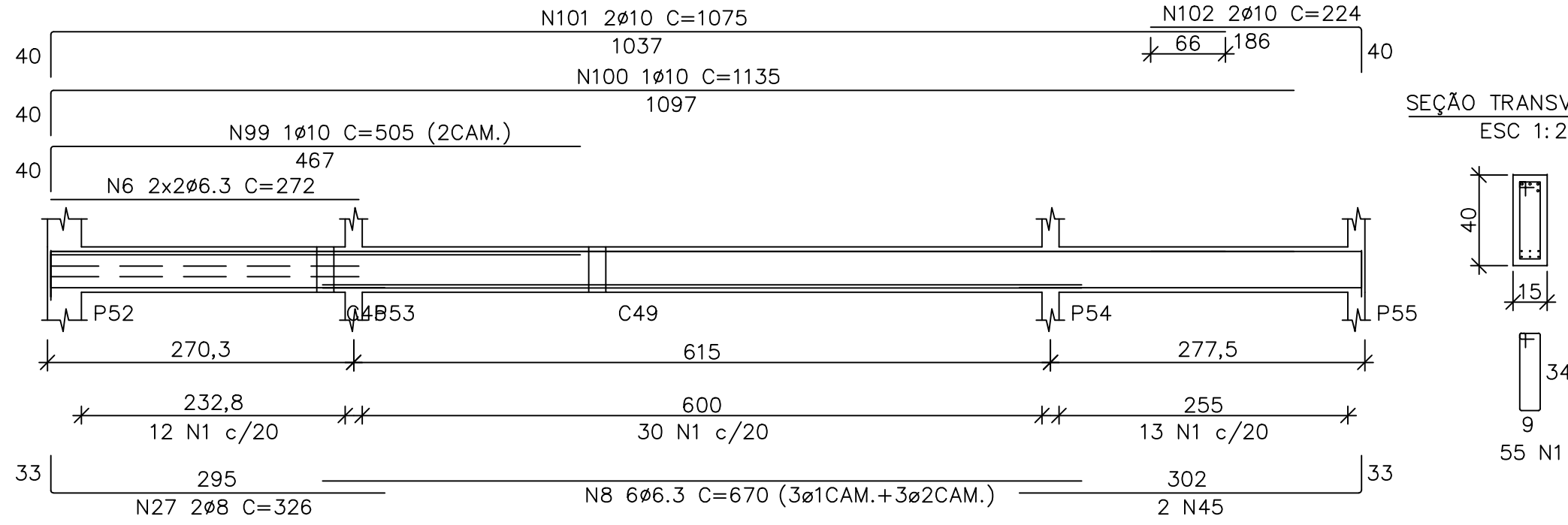


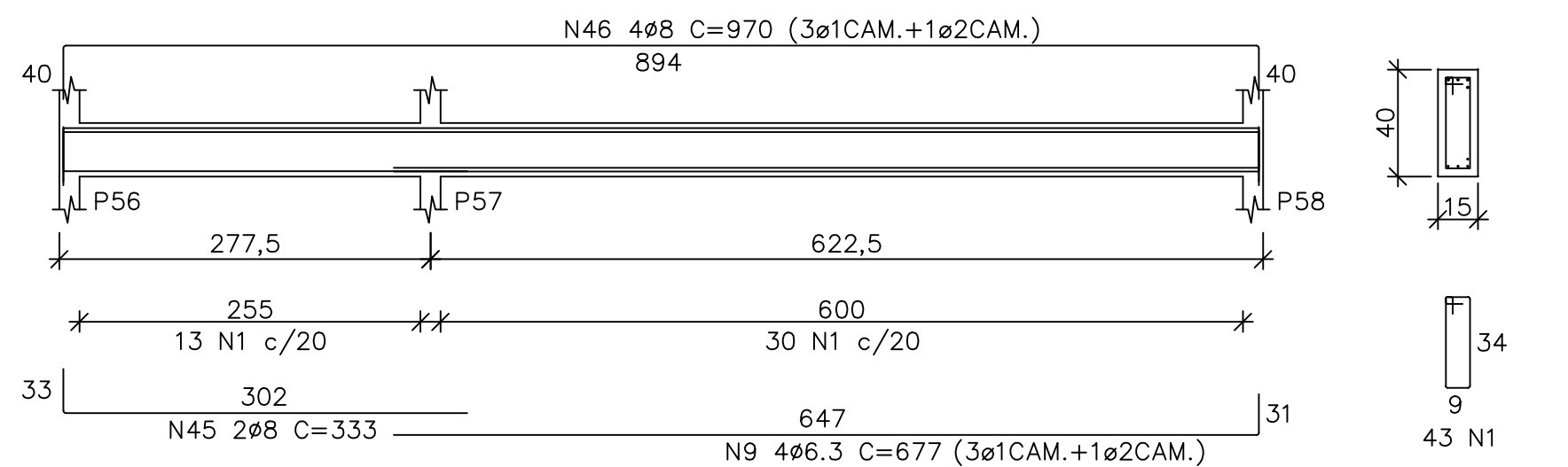
C26 (15x40)
ESC 1:50



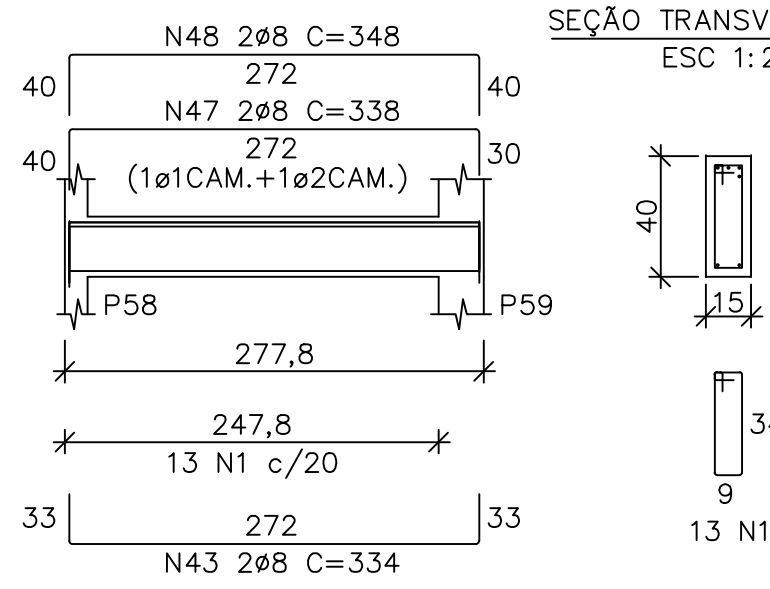
C29 (15x40)
ESC 1:50



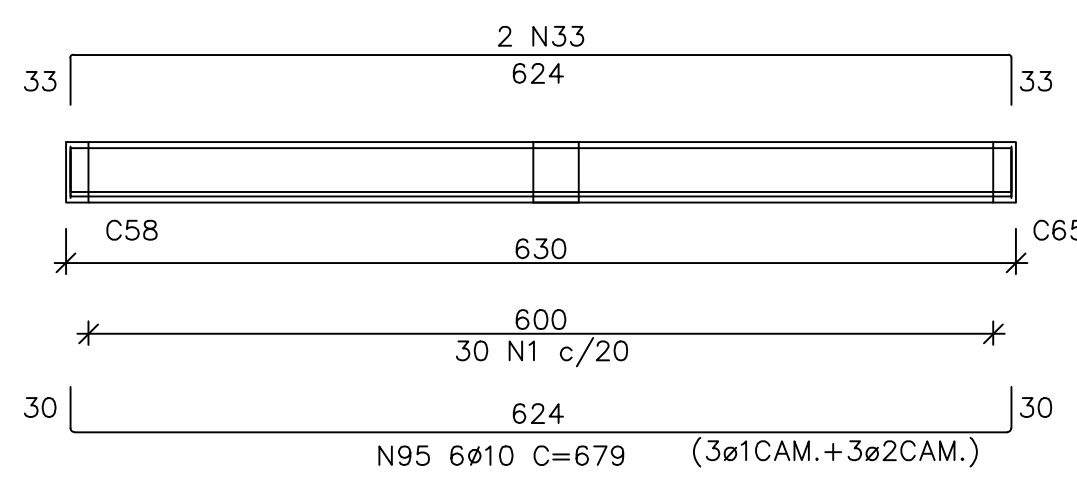
C30 (15x40)
ESC 1:50



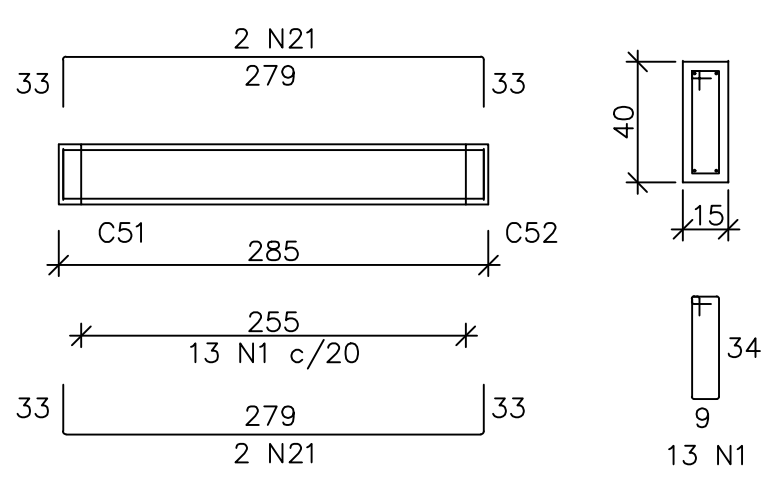
C31 (15x40)
ESC 1:50



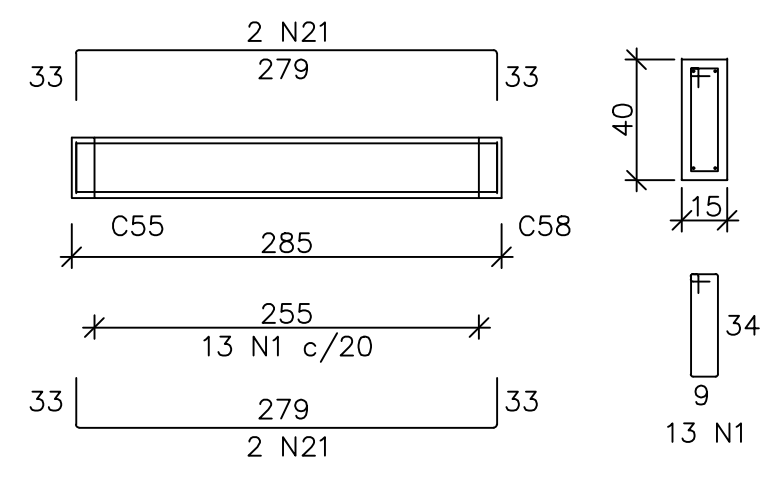
C32 (15x40)
ESC 1:50



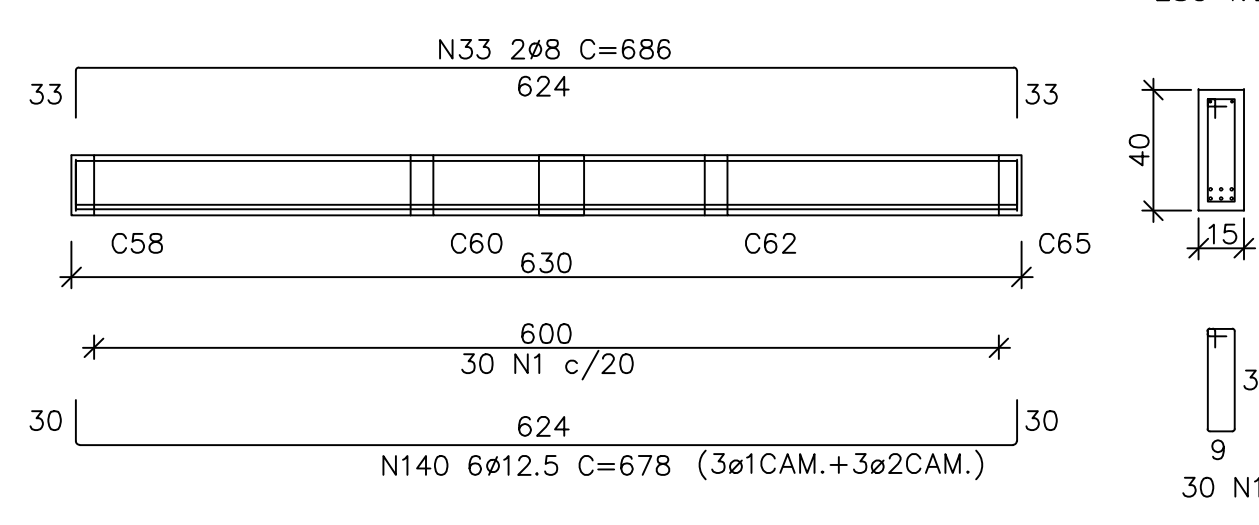
C33 (15x40)
ESC 1:50



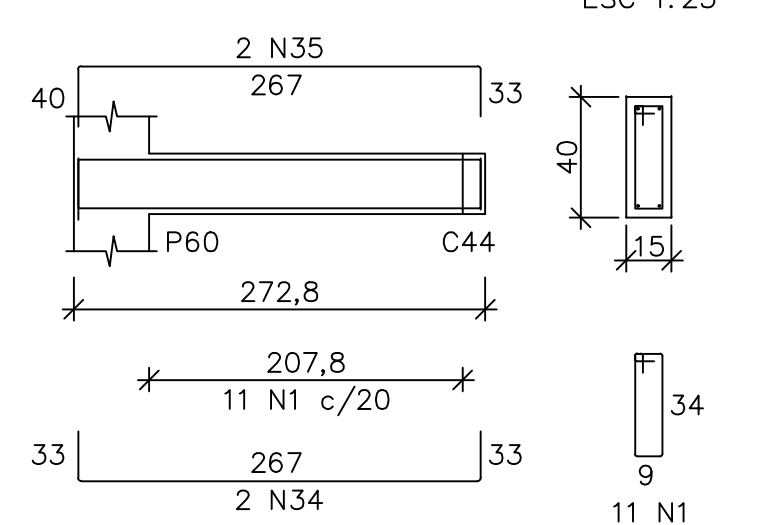
C34 (15x40)
ESC 1:50



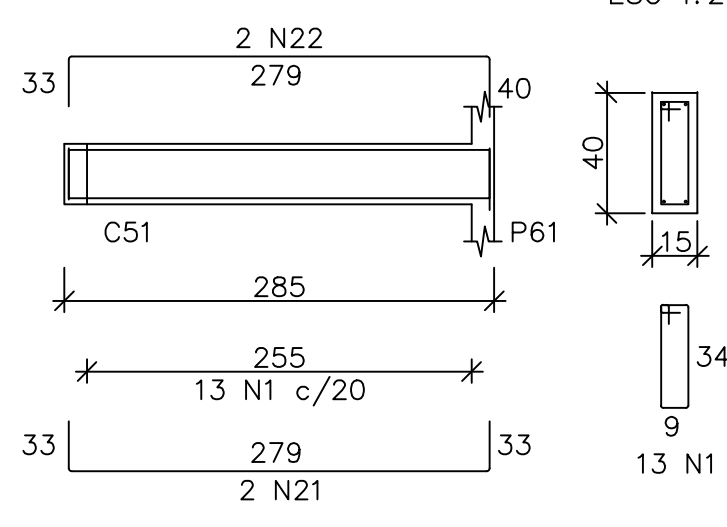
C35 (15x40)
ESC 1:50



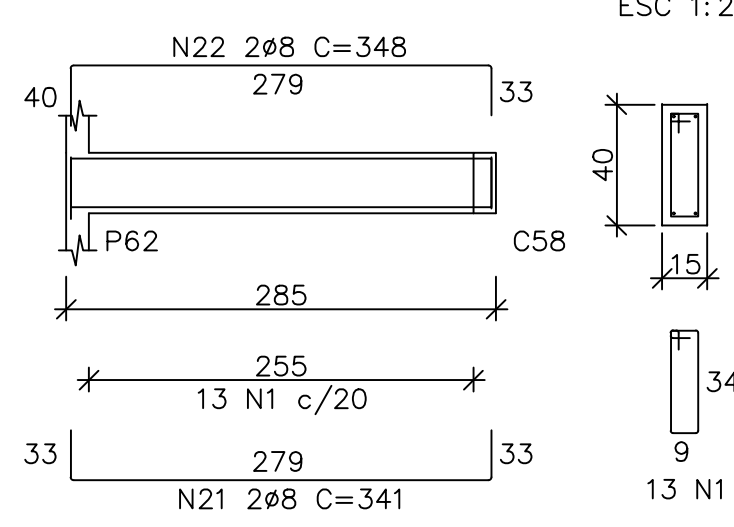
C36 (15x40)
ESC 1:50



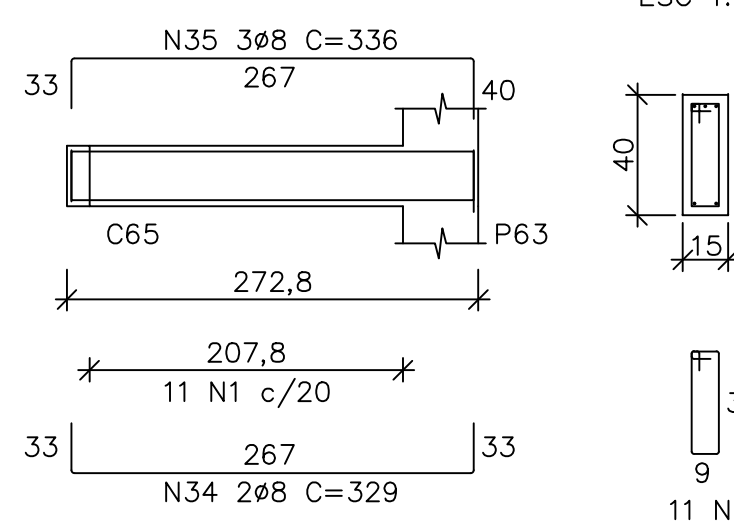
C37 (15x40)
ESC 1:50



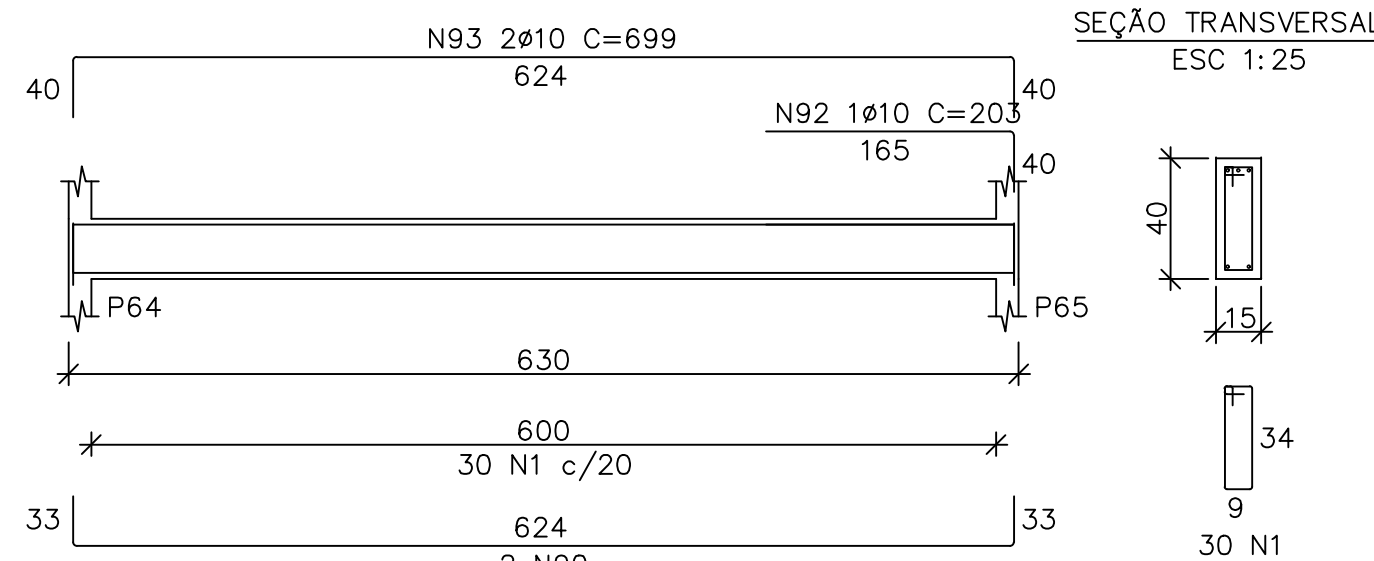
C38 (15x40)
ESC 1:50



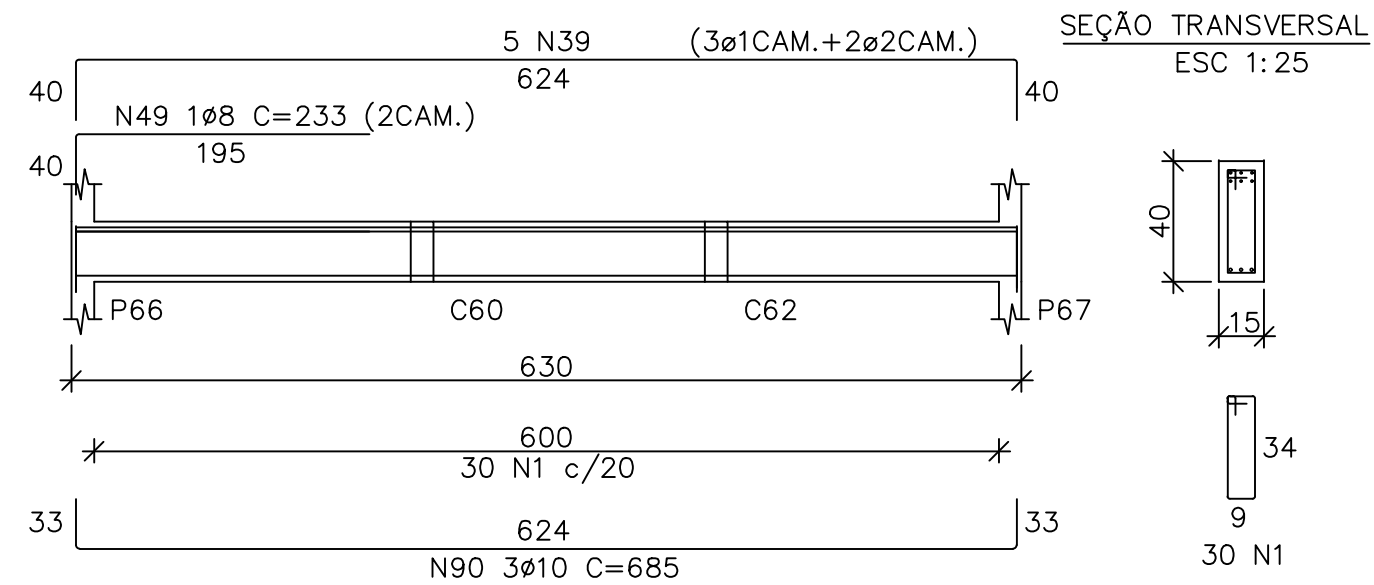
C39 (15x40)
ESC 1:50



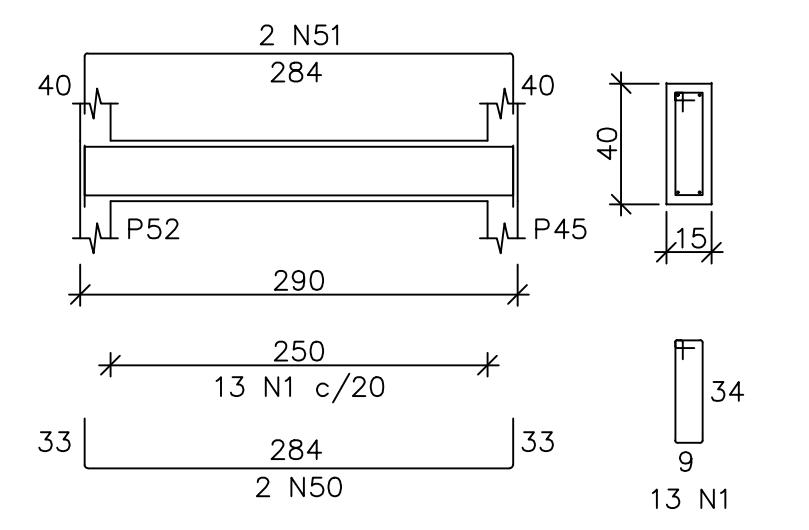
C40 (15x40)
ESC 1:50



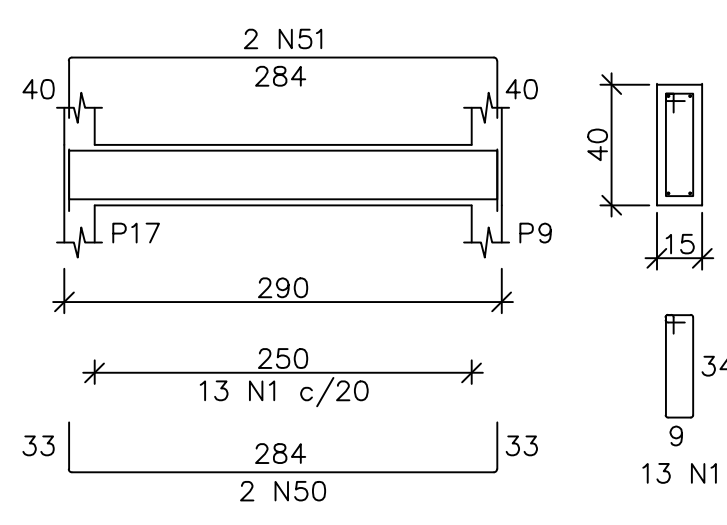
C41 (15x40)
ESC 1:50



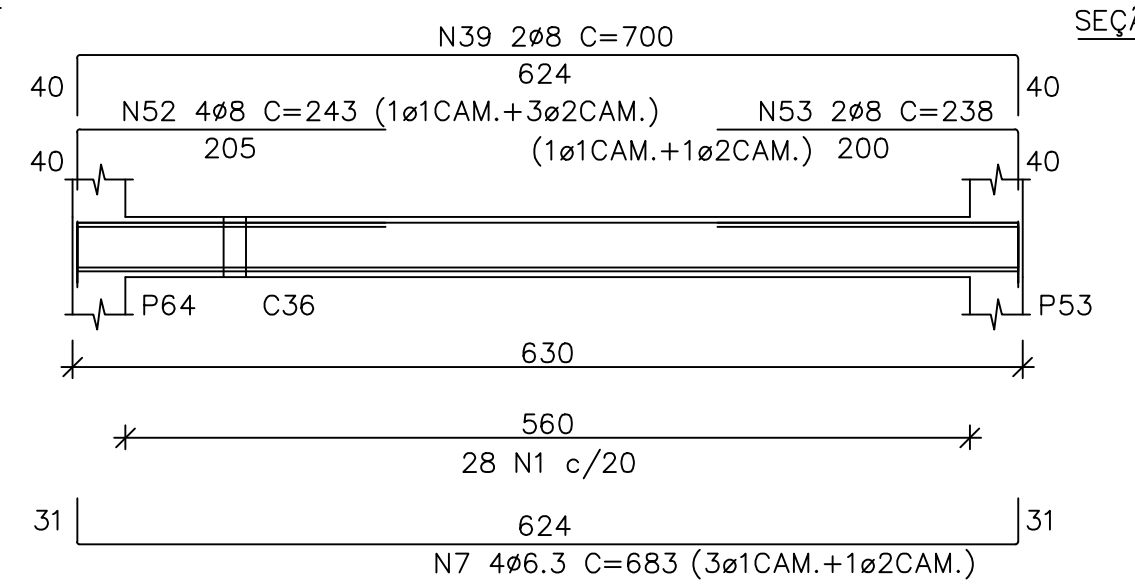
C42 (15x40)
ESC 1:50



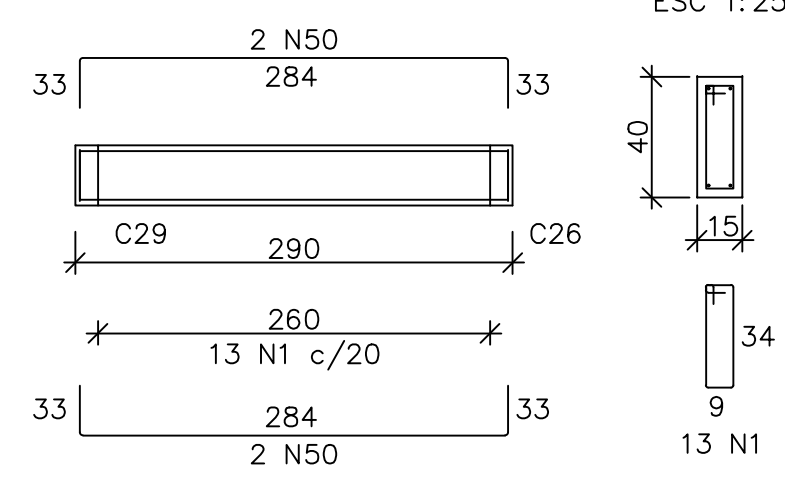
C43 (15x40)
ESC 1:50



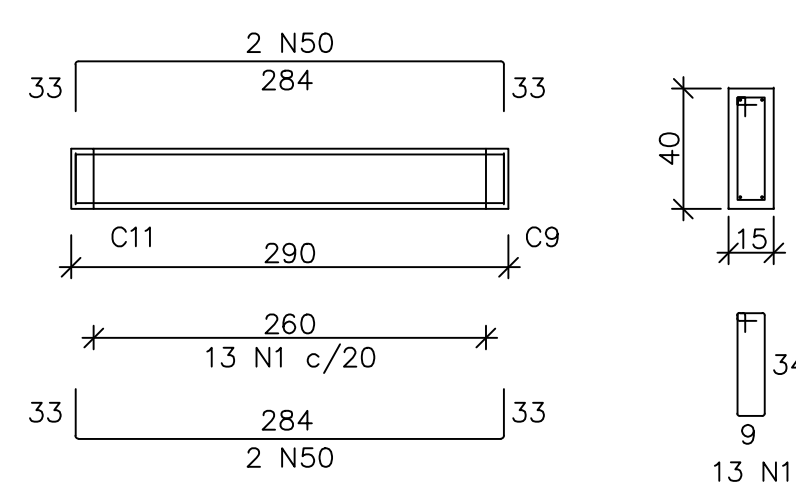
C44 (15x40)
ESC 1:50



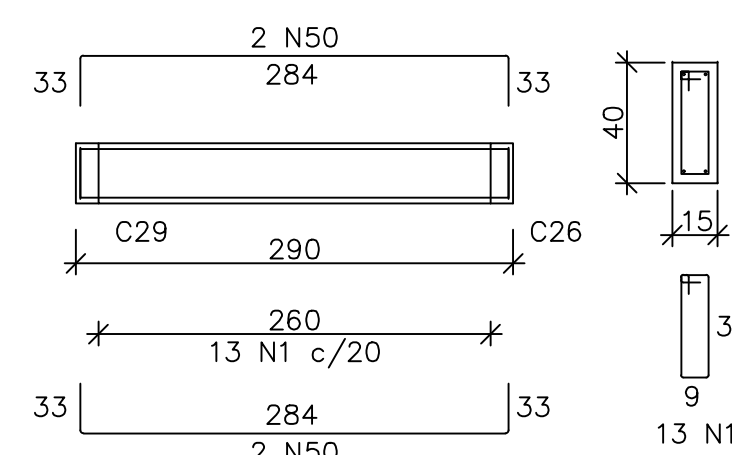
C45 (15x40)
ESC 1:50



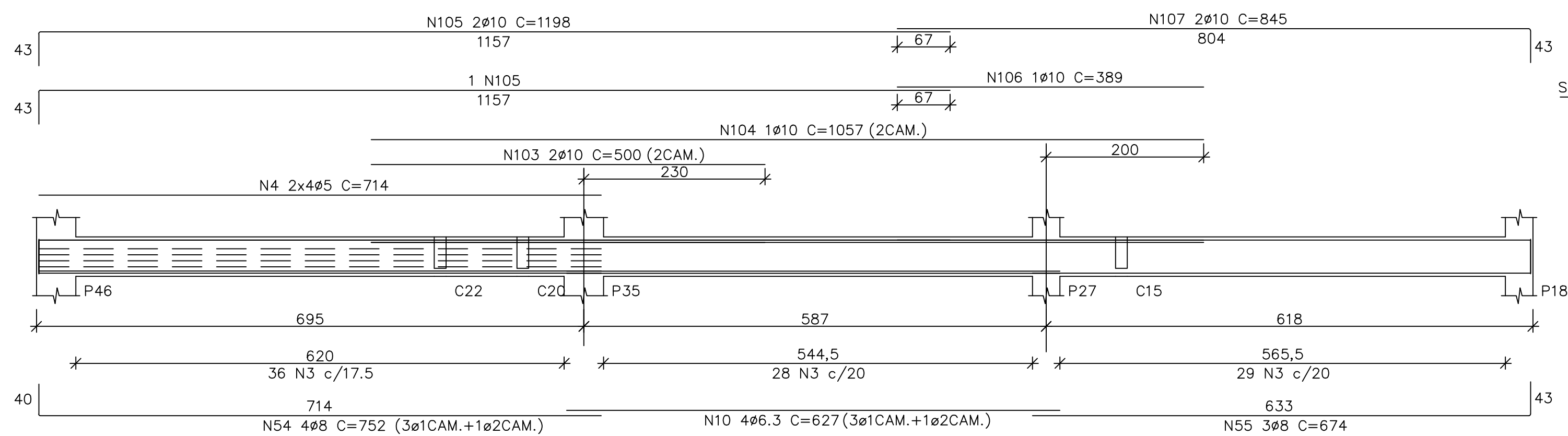
C47 (15x40)
ESC 1:50



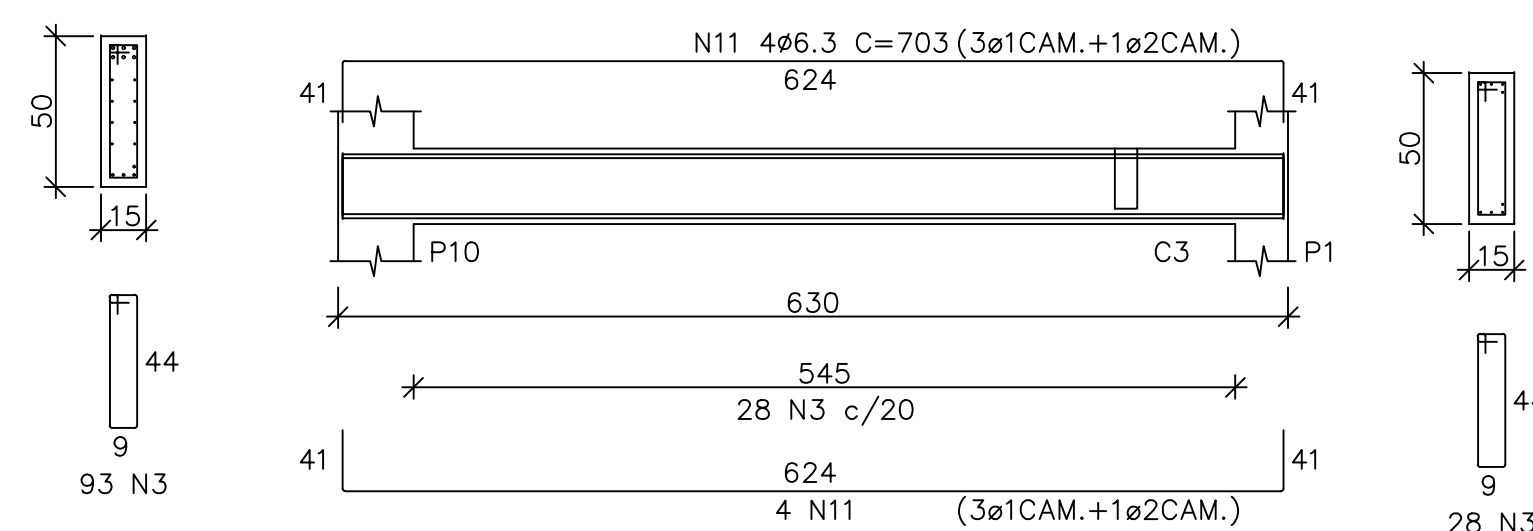
C49 (15x40)
ESC 1:50



C46 (15x50)
ESC 1:50



C48 (15x50)
ESC 1:50



NOTAS:						
1 - MEDIDAS em cm E BITOLAS em mm, SALVO INDICAÇÃO EM CONTRÁRIO.						
2 - COBRIMENTO NOMINAL = 3,0cm.						
3 - DOBRAMENTOS DAS BARRAS CONFORME NORMA NBR 6118.						
4 - CONCRETO ESTRUTURAL CLASSE C30 (A/C<0,55).						
5 - PARA FORMA VER DES. N° 03_A1_PREF SANTA LUZIA_UMEI BOM DESTINO_DETALHADO_EC_VO (RMC-PAV-00421-CC-DD-0003).						
5 - PARA ARMAÇÃO DAS CINTAS PARTE 1-4/3-4/4-4 VER DES. N° 06/08/09_A1_PREF SANTA LUZIA_UMEI BOM DESTINO_DETALHADO_EC_VO (RMC-PAV-00421-CC-DD-0006/0008/0009).						
04	ATENDENDO COMENTÁRIOS	20/01/22	S.AT.	G.C.A.	F.L.S.	
03	PARA APROVAÇÃO	12/11/21	P.I.L	A.H.P.	F.L.S.	
02	PARA APROVAÇÃO	17/09/21	P.I.L	S.AT	F.L.S.	
01	PARA APROVAÇÃO	17/09/21	S.AT.	G.C.A.	F.L.S.	
00	EMIÇÃO INICIAL	15/09/21	S.AT.	G.C.A.	F.L.S.	
REV.	DESCRIÇÃO	DATA	EXEC.	VERIF.	APROV.	

CONTRATADA: VIAVOZ EIRELI		AUTORIA DE PROJETO: FABRICIO LACERDA SILVA	RT: JOSÉ H. R. BAIESSE
REG. CREA: 88752/D		REG. CREA: 53.341/D	
ASS:		ASS:	

CONTRATANTE:	PREFEITURA MUNICIPAL DE SANTA LUZIA		
PROGRAMA:	PROJETO PROGRAMA PROINFÂNCIA		
MUNICÍPIO/ÁREA:	SANTA LUZIA		
TÍTULO:	UMEI BOM DESTINO PROJETO ESTRUTURAL DETALHADO ARMAÇÃO - CINTAS (PARTE 2-4)		
DATA:	15/09/2021	ESCALA:	1/50
ARQUIVO:	07_A1_PREF SANTA LUZIA_UMEI BOM DESTINO_DETALHADO_EC_V2		PRANCHA: 07/15